

GLOBAL GORGEOUS

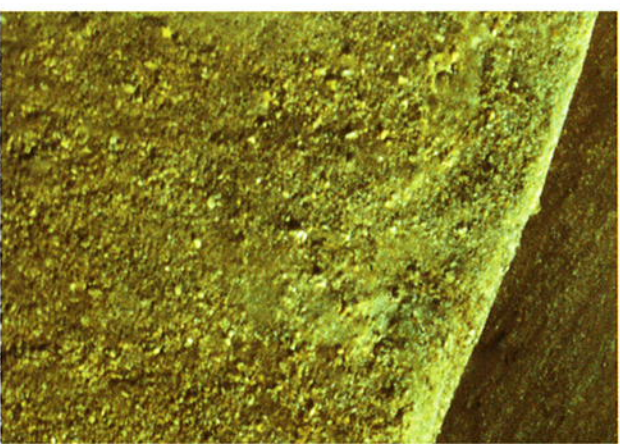
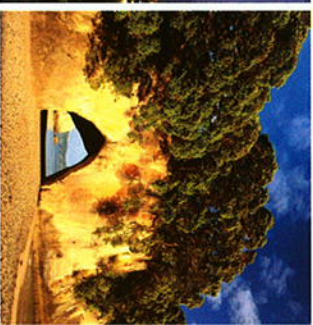
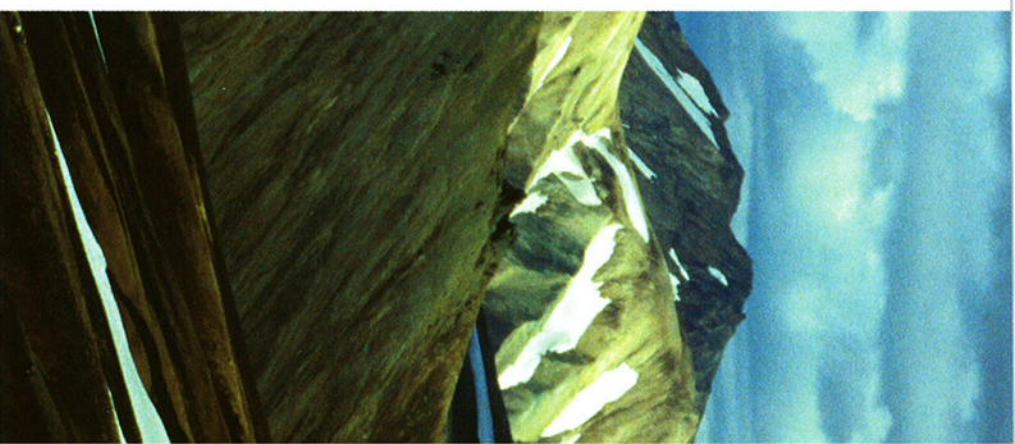


NEW ZEALAND



Paradise in the South Pacific

Legend has it that when Polynesian navigator Kupe discovered New Zealand in 800 AD, his wife, Hine-te-aparangi, named the country Aotearoa, Land of the Long White Cloud. Appropriate—

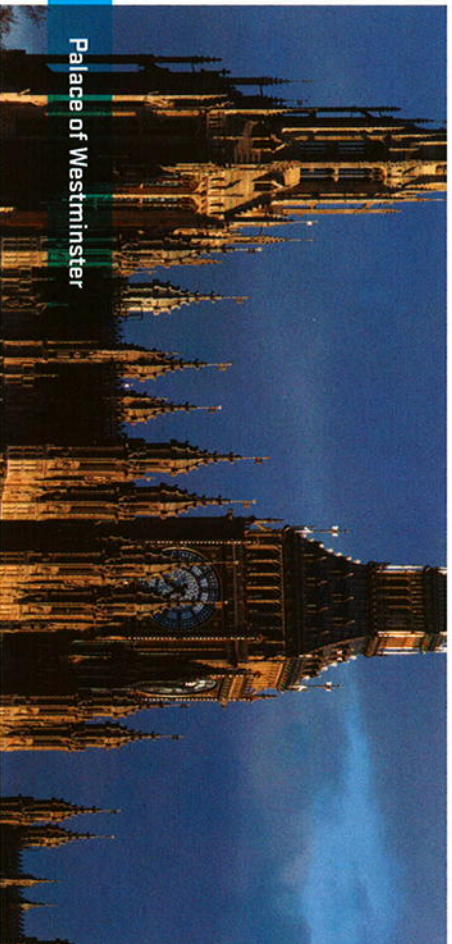
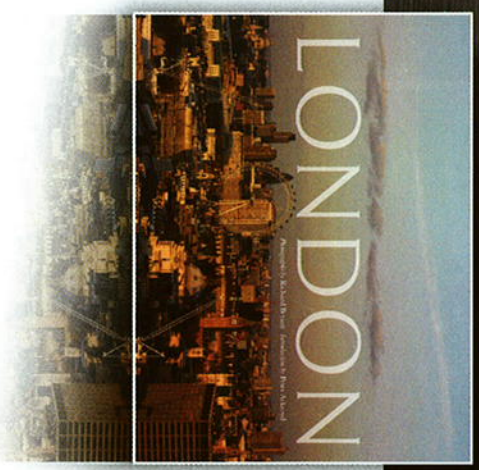


Homestead

An exquisite property in Orewa Point overlooks the Coromandel and Hauraki Gulf.
NZ \$16,000,000.
Doug Boyde.
doug.boyde@century21.co.nz
For more information, turn to p. 25.

New Zealand is heavenly. Located in the “roaring forties” latitude, about 1,250 miles southeast of Australia, a constant wind blows from west to east, ranging from a summer breeze to a winter gale. Mountainous South Island, volcanic North Island, and smaller surrounding islands draw distinct weather patterns—wet, dry, sunny, cloudy—and a remarkable array of flora and fauna. (Think giant kauri and flightless kiwi.) But New Zealand isn’t just forests and birds. The Southern Alps, massive caves, deserted beaches, boiling mud, rapid rivers, and hissing geysers also make it an extraordinary place to explore—or settle.

London Is Calling



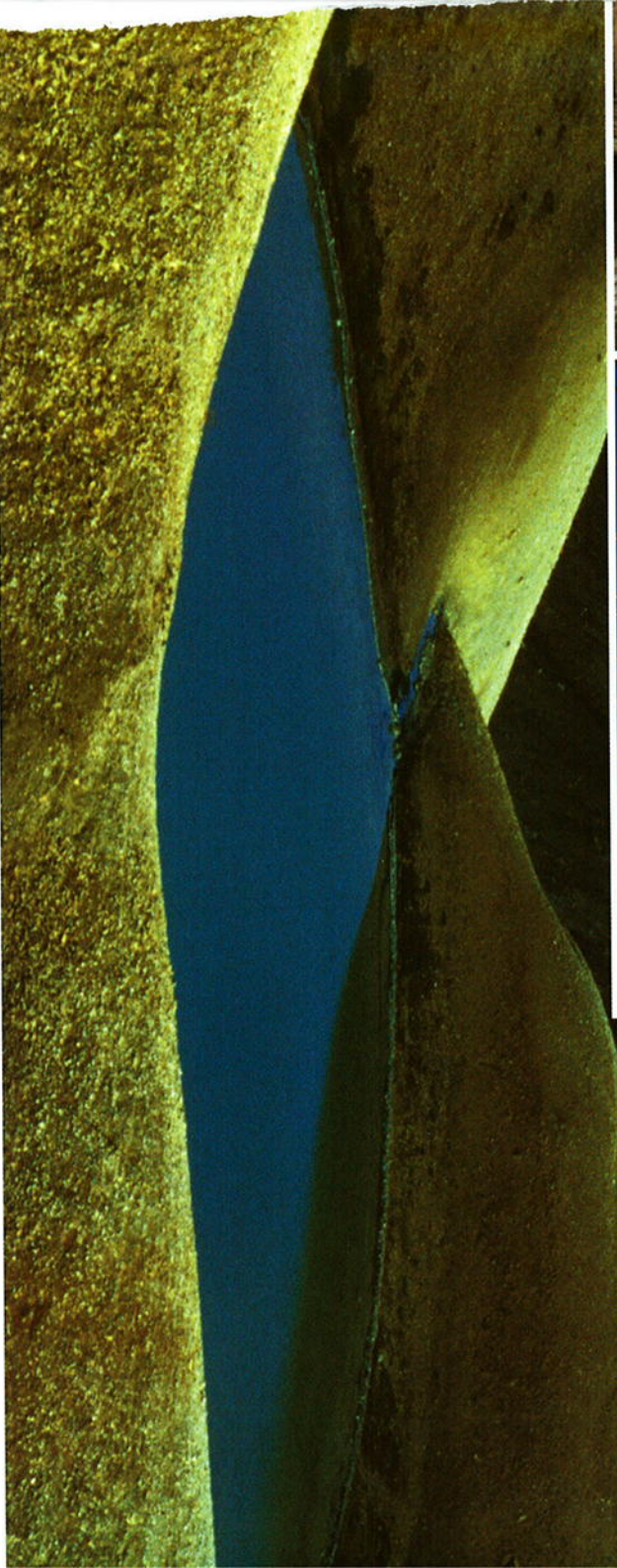
London, in the tradition of its literary predecessors **New York New York**, **Los Angeles**, and **Atlantic**, showcases stunning panoramic photography—and 10 breathtaking gatefolds that open to six feet of cityscape. This deluxe volume will be limited to 5,000 numbered copies, each including a signed print. A unique and definitive tribute to one of the most amazing cities in the world, **London** is a must-have for any Anglophile.
London, by Richard Bryant; Rizzoli
New York; \$195, rizzoliusa.com.

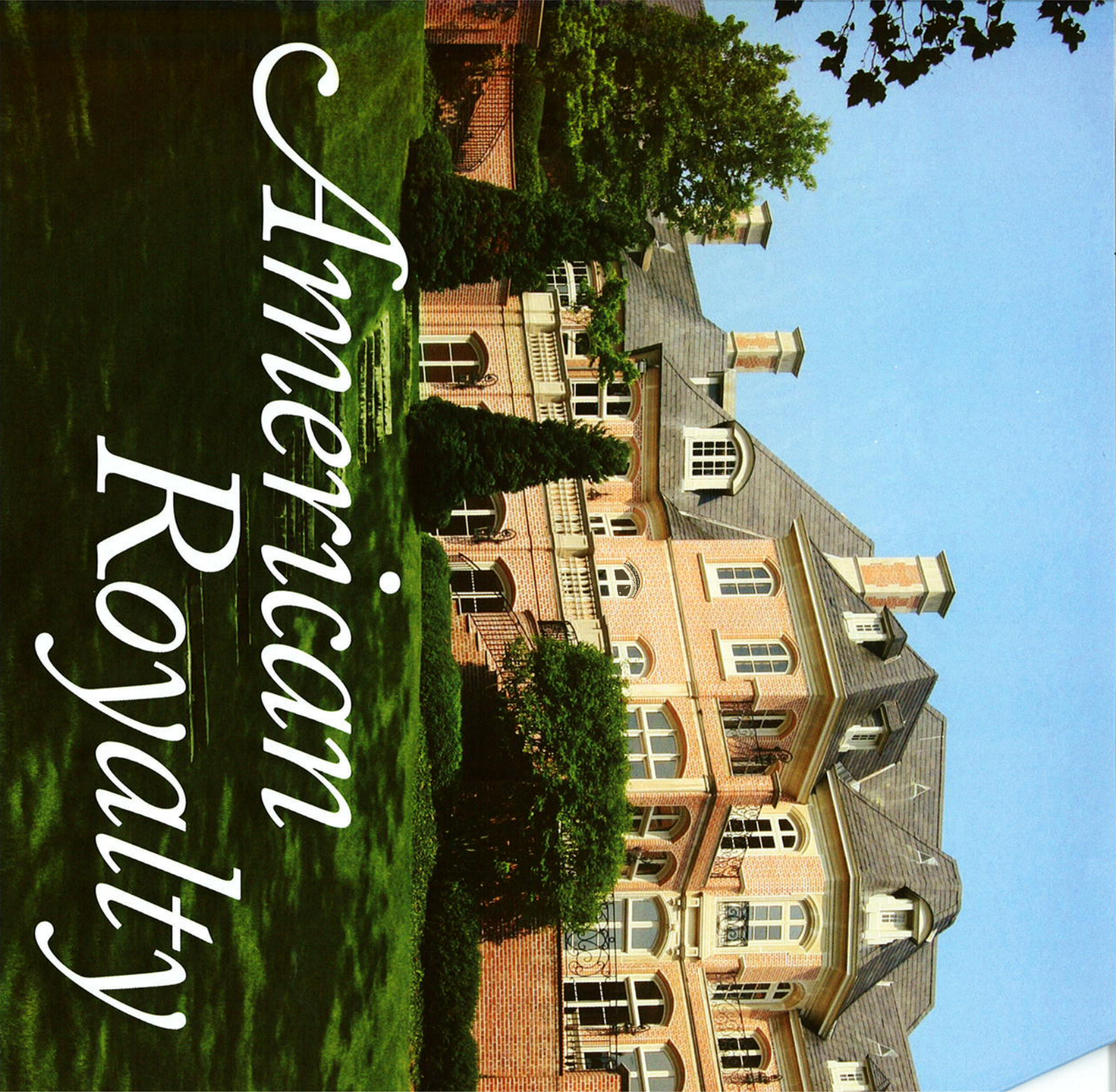


Land of the Long White Cloud



If you like, you can go tramping [hiking], bungee jumping, or simply gambol with newborn lambs. But New Zealand offers a metropolitan side, too. Auckland, the “City of Sails,” and Christchurch are two of the country’s largest cities. In their eclectic mix of art, architecture, and entertainment, you will find the cultural amalgam that is New Zealand—British roots, Māori, Australian, and American influences.





American Royalty

*Live like a king in
the heart of the U.S.A.*

In Carmel, Indiana, stands a majestic estate. Dubbed “Le Chateau Renaissance” by its original owner, this breathtaking property conjures the lives—and luxuries—of European kings and queens. But despite its regal air, this home is rooted in down-to-earth tradition.

PROPERTIES *New Zealand*



NELSON, NEW ZEALAND

The Lodge at Parathio Farms, built in 1999, makes a sublime private, corporate, or guest retreat. Spanning 2,000 +/- acres, the property is also one of the South Island's leading sheep and cattle farming operations. **NZ \$14,500,000**+GST (Goods & Services Tax) Land and buildings only. John McNeill. john.mcnell@century21.co.nz

CENTURY 21 Nelson & Bays New Zealand

+64.354.68888 ● ● ● century21.co.nz

24 FALL 2008 CENTURY 21 Fine Homes & Estates

FineHomesandEstates.com



PUNTA PACIFICA, PANAMA

Considered the best project in Panama, with its towers, amazing villas, club house, and ocean views. This unique 2-story master penthouse in sister tower is to be completed at the end of 2009. It has 10,763 sf of living space with luxury finishes, 4 BR, 4.5 baths, living room, dining area, den, office, 6 balconies, kitchen, 2 maid's quarters, and 4 parking spaces. The building has pool, sauna, party rooms, complex clubhouse with large private gym, squash court, and ballroom. #10394. **\$2,860,000.** Frank.Morrice@SemusRealty.com

CENTURY 21 Semusa Realty
 877.716.0699 ●●● SemusRealty.com



PUNTA PACIFICA, PANAMA

Ocean front condo at the point of Punta Pacifica with wonderful views of the Amador Causeway (Panama Canal Entrance) and Historic Old Quarters. Elegant lobby with luxury finishes, ocean view ballrooms, endless pool, squash court, sauna, and gym. Condo has 6,964.25 sf of living space with top-of-the-line finishes, 4 BR, 4.5 baths, dining room, large terrace overlooking the ocean, den, kitchen, service quarters, 3 parking spaces, and storage area. #10378. **\$2,000,000.** Frank.Morrice@SemusRealty.com

CENTURY 21 Semusa Realty
 877.716.0699 ●●● SemusRealty.com

